

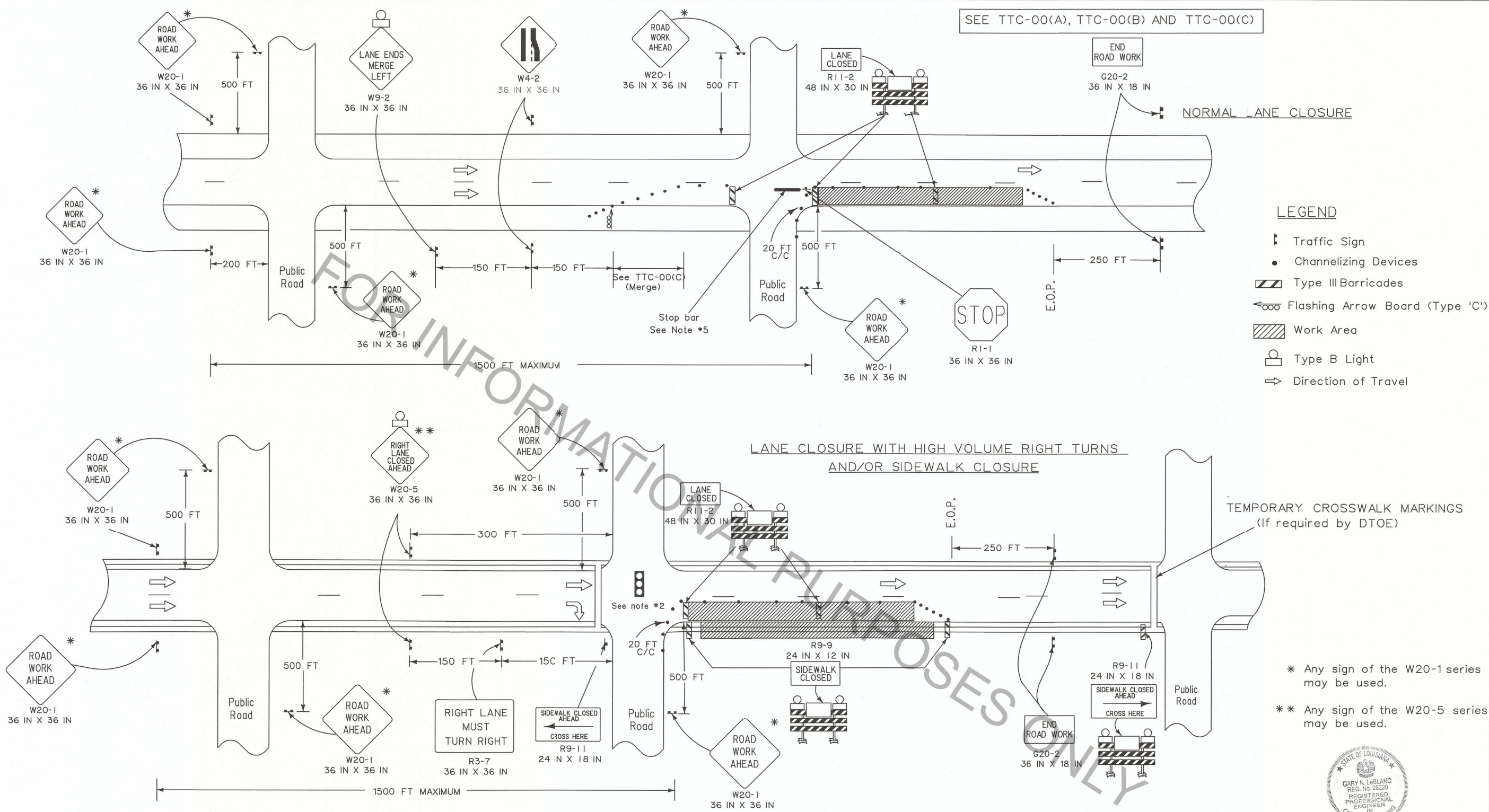
SHEET NUMBER	
DESIGNED BY	G. LEBLANC
CHECKED BY	J. COLVIN
DATE	
REVISION OR CHANGE ORDER DESCRIPTION	
NO.	
DATE	
APPROVED BY	
CHIEF ENGINEER	
DATE	7/2/18



TEMPORARY TRAFFIC CONTROL FOR LANE AND SIDEWALK CLOSURES IN URBAN AREAS WITH SPEED LIMIT LESS THAN OR EQUAL TO 40 MPH



SEE TTC-00(A), TTC-00(B) AND TTC-00(C)



- LEGEND**
- ⏏ Traffic Sign
 - Channelizing Devices
 - ▨ Type III Barricades
 - ⏏ Flashing Arrow Board (Type 'C')
 - ▨ Work Area
 - ⦿ Type B Light
 - ➔ Direction of Travel

* Any sign of the W20-1 series may be used.
 ** Any sign of the W20-5 series may be used.

GARY N. LEBLANC
 REG. NO. 22220
 REGISTERED PROFESSIONAL ENGINEER
 IN CIVIL ENGINEERING
 6-27-18

NOTES

1. This layout represents the minimum traffic controls required for lane closures in areas with a grid layout and with speed limits of 40 mph and below. This layout illustrates roadwork near a signal or a major intersection with or without sidewalks.
2. If a signal is involved in the construction zone, a specific temporary traffic signal timing and phasing plan for each phase of construction shall be developed.
3. Bicyclists and pedestrians, including those with disabilities, should be provided with access and reasonably safe passage through the TTC zone.
4. The sign height shall be at least 7 feet in business, commercial, and residential areas and also near parking, pedestrians, bicyclists, or other obstructions.
5. Place stop bars if work duration is greater than 3 days.
6. Place "Road Work Ahead" sign prior to an intersecting alternate route, no more than 1500 feet from the work area.
7. When crosswalks or other pedestrian facilities are closed or relocated, temporary facilities shall be detectable and shall include accessibility features consistent with the features in the existing pedestrian facilities as defined in the MUTCD.

ALL TTC STANDARDS SHOW MINIMUM CONSTRUCTION SIGNING.
 ALL SITUATIONS SHALL BE REVIEWED AND/OR DESIGNED BY THE ENGINEER.
 CONTRACTORS ARE RESPONSIBLE FOR COMPLYING WITH ALL TTC STANDARDS.